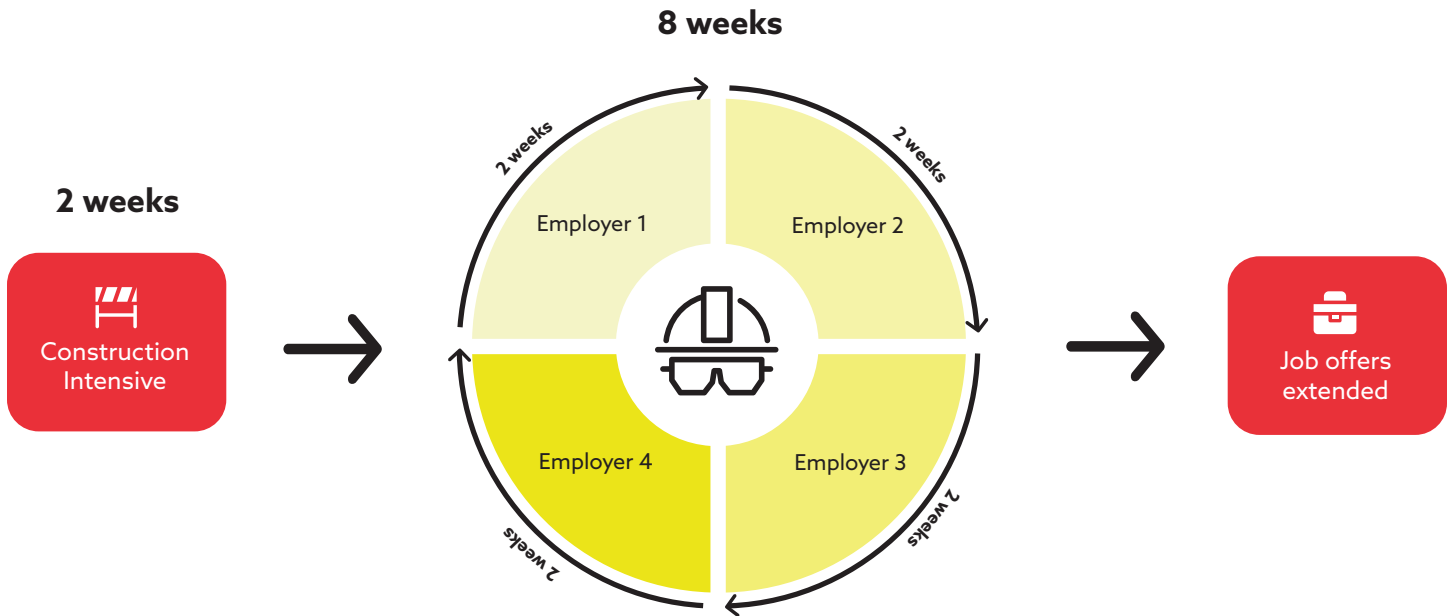


# P.A.C.E. PROGRAM

Pre-Apprentice Construction Experience



## What Is P.A.C.E.?

The construction industry is facing a severe hiring shortage and trade workers are in high demand. Despite this demand, it can be difficult for someone interested in the trades, but with no experience or connections in the industry, to begin a career in construction. Those that are able to enter the industry without formal training or basic trade experience often encounter lower wages and significant turnover in the workforce.

The Pre-apprenticeship Construction Experience (P.A.C.E.) program provides the basic training and networking needed to start a career in the trades, teaching foundational skills and facilitating hands-on experiences for potential employees to gain essential skills that are useful in a variety of trades.

**" I chose the P.A.C.E. program because I know that if I can master a trade, I will have a career for life, a good career for me and my son. " - Yanalise Hodge**

**" It has exceeded my expectations. I like how it feels you have the time to work without being rushed and everyone is really helpful. " - Connor Jones**

## How Does It Work?

The Pre-Apprenticeship Construction Experience (P.A.C.E) is a ten-week job training and work experience program where students learn general knowledge of different trades through a combination of classroom instruction, hands-on workshops, and on-the-job employer training by working with employers. The program is divided in two phases: Construction Intensive Instruction and Trade Rotations.

[P.A.C.E. Video](#)

## Construction Intensive Instruction

Participants spend two weeks in a construction-based intensive bootcamp, learning essential skills that are the foundation of trade work.

In addition to skills training, participants focus on safety, earning OSHA 10 and First Aid/CPR certifications, learning about site safety through NCCER CORE materials, and understanding the importance of Personal Protective Equipment.

Participants also practice proper use of hand and power tools in workshops and in-class construction projects.

## Employer Rotations

After the Construction Intensive Instruction, participants gain real experience on job sites, completing two-week rotations with four different employer partners. While on these rotations, participants gain both on-the-job experience and learn the career potential for those trades.

## Earn While You Learn

In addition to training and on-the-job experience, participants are paid a living wage while they are enrolled in the program. We understand that training programs can be cost-prohibitive, and we want to make this opportunity available to anyone who is interested.

Participants train-work 40 hours a week at a rate of **\$14/hour** for a total of **\$5,600** for the 10-week training period.

## What Happens Next?

Upon successful completion of the program, employer partners have the opportunity to extend job offers to the participants, who are then able to choose the career path that best suits them.

All participants who successfully complete the P.A.C.E. program will receive a toolbox replete with a large supply of hand tools, ensuring that participants enter the marketplace with the training and tools necessary for success.

## When?

February 13 – April 28, 2023 (Apply today!)



## Employers

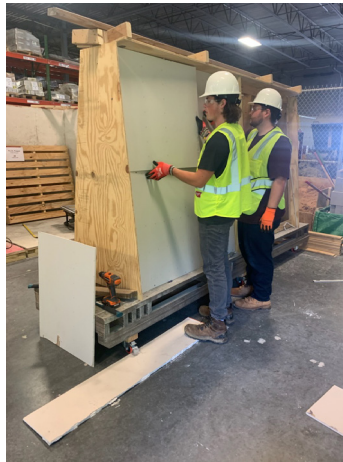
Interested in participating in P.A.C.E. as an employer partner?

The P.A.C.E. program is beneficial for our employer partners as an opportunity to work with a variety of talent without firm commitments, interacting with future employees and learning their potential prior to offering a position.

### Benefits:

- Vet potential employees without commitments.
- Employment possibility.
- Work together with businesses in the industry.
- Realize savings in terms of recruitment, onboarding, and early training costs.
- Higher rate of retention due to a better alignment of employees and their career objectives.

### Past Rotations



**craft & trade**  
ACADEMY